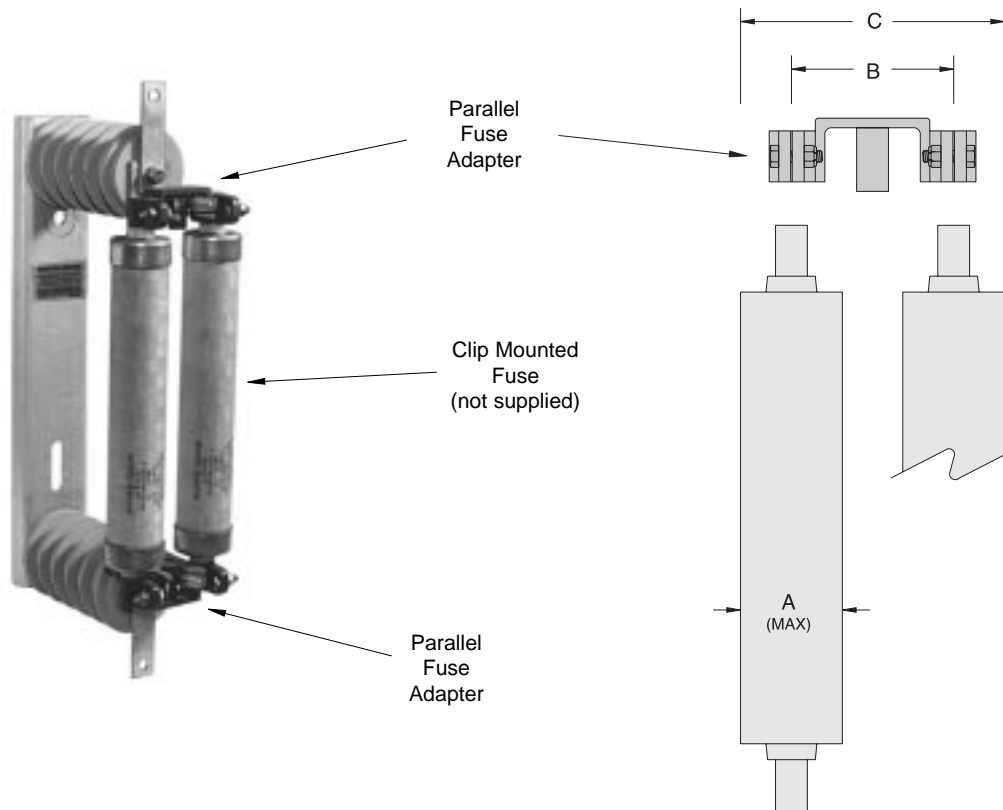


Parallel Fuse Adapter

For Clip Mounted Fuses



The Elliott Parallel Fuse Adapter is designed to parallel two clip mounted fuses and allow the assembly to be installed in a fuse mounting designed for a single fuse. *For example: two 40 amp Code 5 fuses assembled in the Parallel Fuse Adapters may be installed in a Code 5 single fuse mounting to achieve an 80 amp rating.*

CAUTION: Adequate space must be available to provide phase-to-ground, phase-to-barrier and phase-to-phase clearance necessary for proper operation at rated voltage. When in doubt, contact the factory for recommendation.

| Catalog No. | Description | A | B | C | Net Weight Pounds (kg) |
|----------------|---|------|---------|--------|------------------------|
| 3902-2DPF | Parallel Fuse Adapter (2/Set) <i>for fuses up to 2" diameter</i> | 2.0" | 3.125" | 5.125" | 1.5 (0.68) |
| 3902-2DPF-FHT | Fuse Handling Tool | 2.0" | NA | NA | 0.5 (0.23) |
| 3902-35DPF | Parallel Fuse Adapter (2/Set) <i>for fuses up to 3.5" diameter</i> | 3.5" | 4.5625" | 8.0" | 2.0 (0.91) |
| 3902-35DPF-FHT | Fuse Handling Tool | 3.5" | NA | NA | 0.75 (0.34) |



Parallel Fuse Adapter
For Clip Mounted Fuses

Descriptive
Bulletin
3902
Page 2 2001

**If you do not find the design
you need
PLEASE CONTACT
our REPRESENTATIVE or the FACTORY**