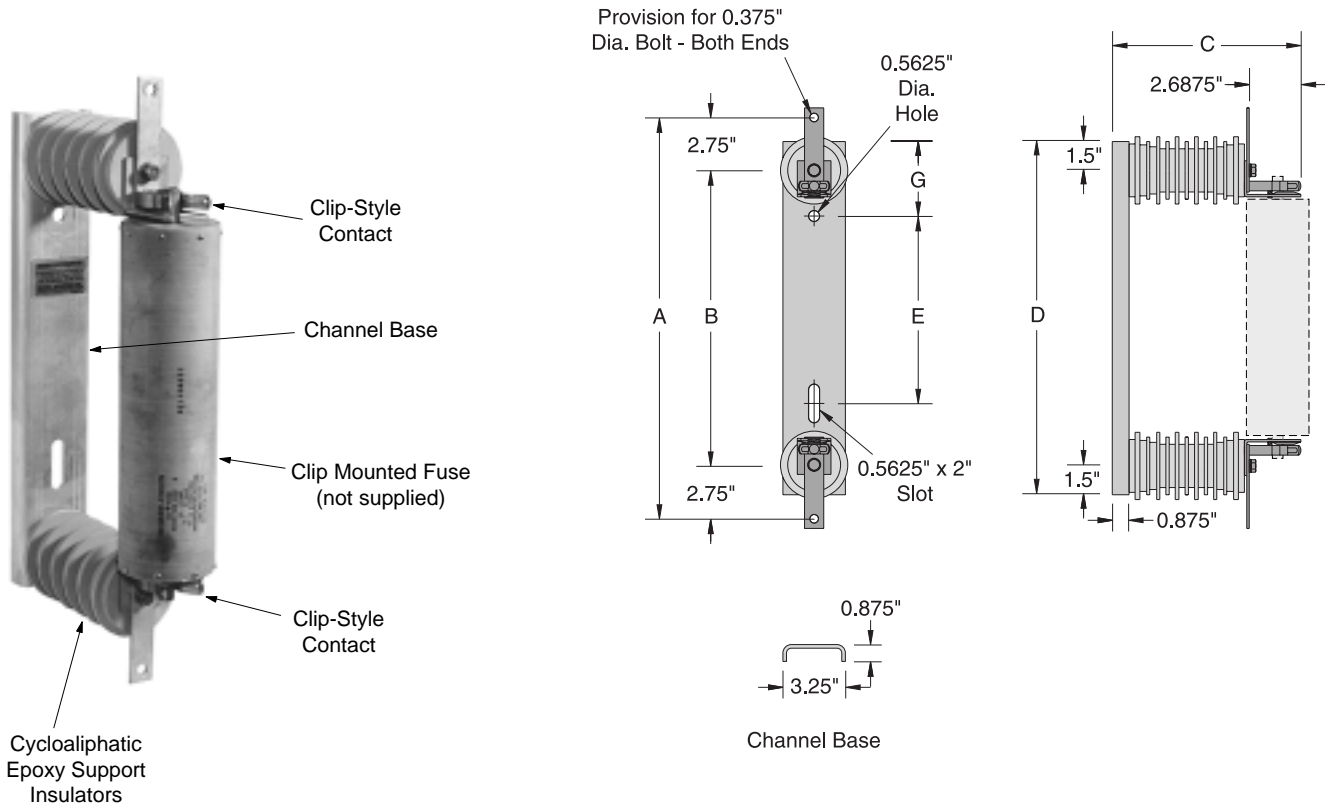


Single Fuse Clip-Style Mounting



A 3 x 4.5 inch label with the following wording accompanies all frame and box mounting assemblies: "CAUTION - Fuse or switch may be live in open position."

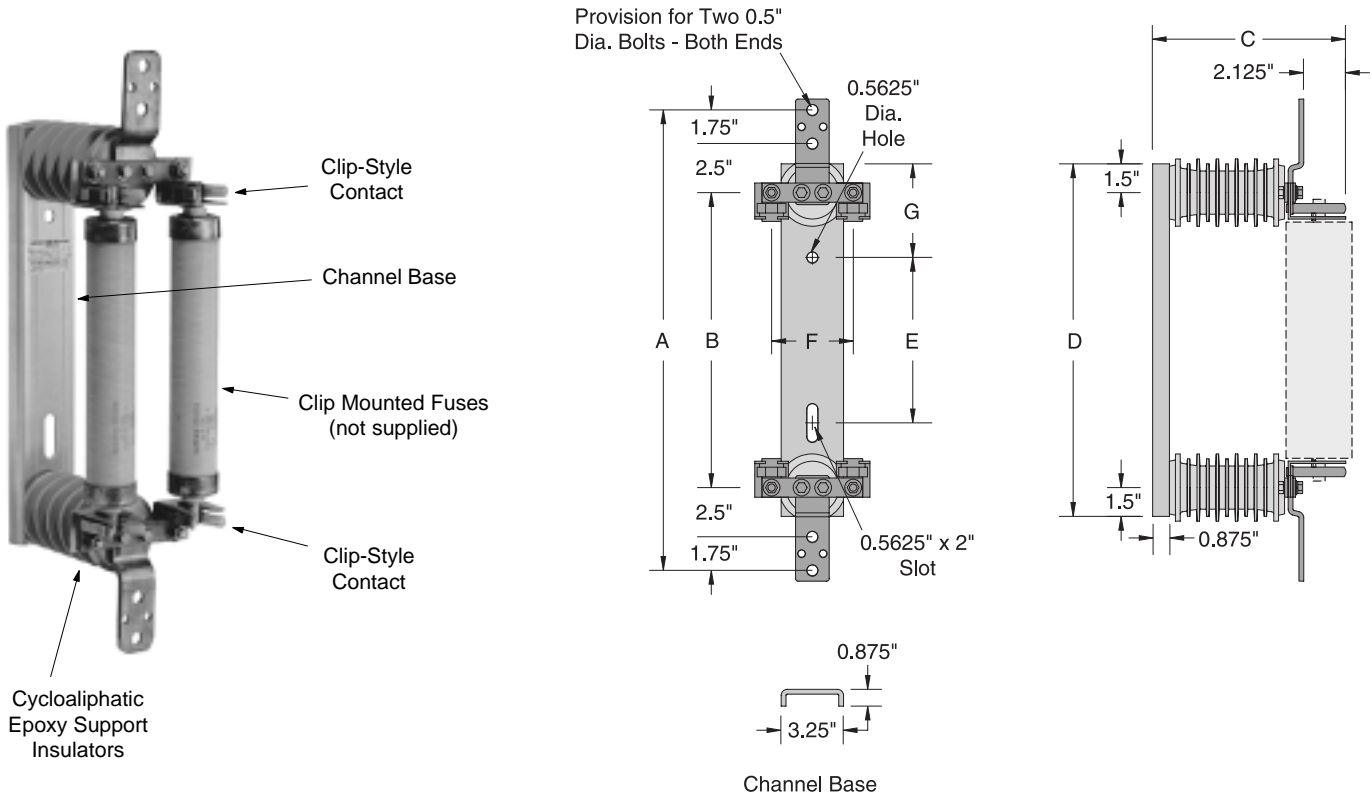
Ratings and Dimensions of Channel-Based Mounting for Clip-Style NX® Fuses

Mounting Type	Maximum Voltage Rating kV	BIL kV	Mounting Code Number*	Catalog Number	Dimensions Inches						
					A	B	C	D	E	F	G
Single Fuse, Single Pole	8.3	95	4	EFAB1D1	16.5	11	9.8125	14	5	-	3.875
	15.5	95	5	EFAB1D2	20.875	15.375	9.8125	18.375	9.75	-	3.875
	15.5	125	5	EFAB1D4	20.875	15.375	11.3125	18.375	9.75	-	3.875
	15.5	95	6	EFAB1D5	23.6875	18.1875	9.8125	21.1875	12.5625	-	3.875
	15.5	125	6	EFAB1D8	23.6875	18.1875	11.3125	21.1875	12.5625	-	3.875
	23	150	6	EFAB1D3	23.6875	18.1875	13.8125	21.1875	12.5625	-	3.875
	27	150	9	EFAB1D6	33.5625	28.0625	13.8125	31.0625	17.5	-	6
	38	150	10	EFAB1D7	41.5625	36.0625	13.8125	39.0625	25	-	6.25

*Code Number of Mounting must match Code Number of Fuse.

NX® is a registered trademark of Cooper Power Systems, Inc.

Parallel Fuse Clip-Style Mounting



A 3 x 4.5 inch label with the following wording accompanies all frame and box mounting assemblies: "CAUTION - Fuse or switch may be live in open position."

Ratings and Dimensions of Channel-Based Mounting for Clip-Style NX® Fuses

Mounting Type	Maximum Voltage Rating kV	BIL kV	Mounting Code Number*	Catalog Number	Dimensions Inches						
					A	B	C	D	E	F	G
Parallel Fuse, Single Pole	8.3	95	4	EFAB1K1	19.5	11	10	14	5	4.25	3.875
	15.5	95	5	EFAB1K2	23.875	15.375	10	18.375	9.75	4.25	3.875
	15.5	125	5	EFAB1K3	23.875	15.375	11.5	18.375	9.75	4.25	3.875
	15.5	95	6	EFAB1K4	26.6875	18.1875	10	21.1875	12.5625	4.25	3.875
	23	125	6	EFAB1K5	26.6875	18.1875	11.5	21.1875	12.5625	4.25	3.875
	23	150	6	EFAB3K3	26.6875	18.1875	14	21.1875	12.5625	4.25	3.875
	27	150	9	EFAB3K1	36.5625	28.0625	14	31.0625	17.5	4.25	6
	38	150	10	EFAB3K2	44.5625	36.0625	14	39.0625	25	4.25	6.25

*Code Number of Mounting must match Code Number of Fuse.

NX® is a registered trademark of Cooper Power Systems, Inc.