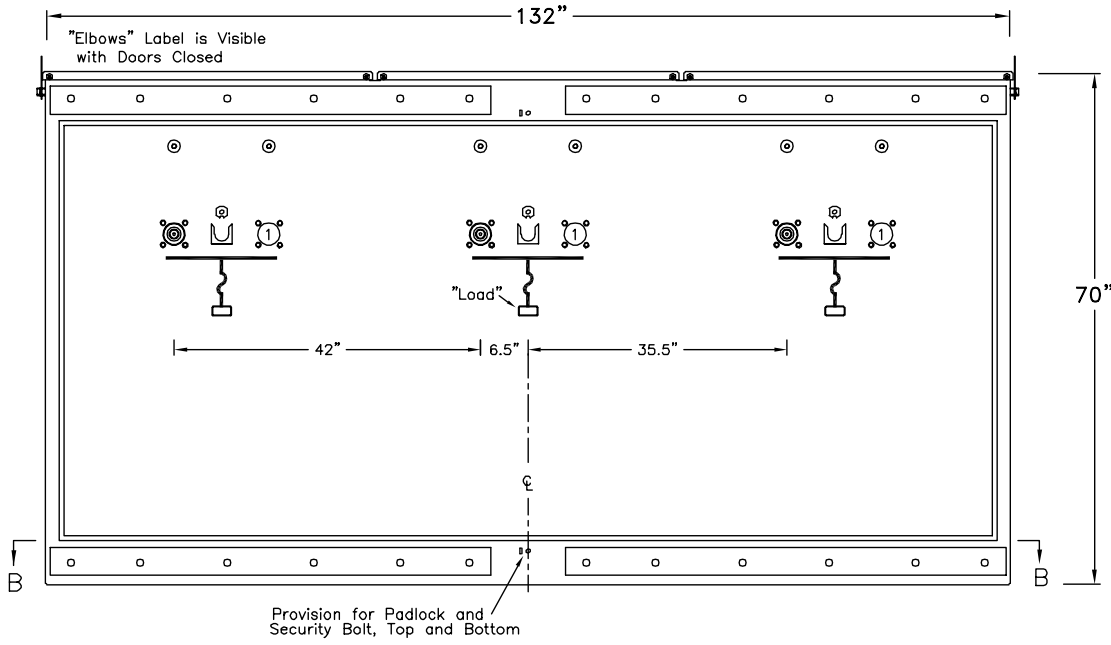
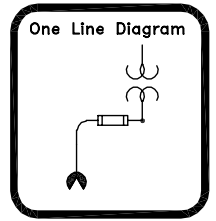


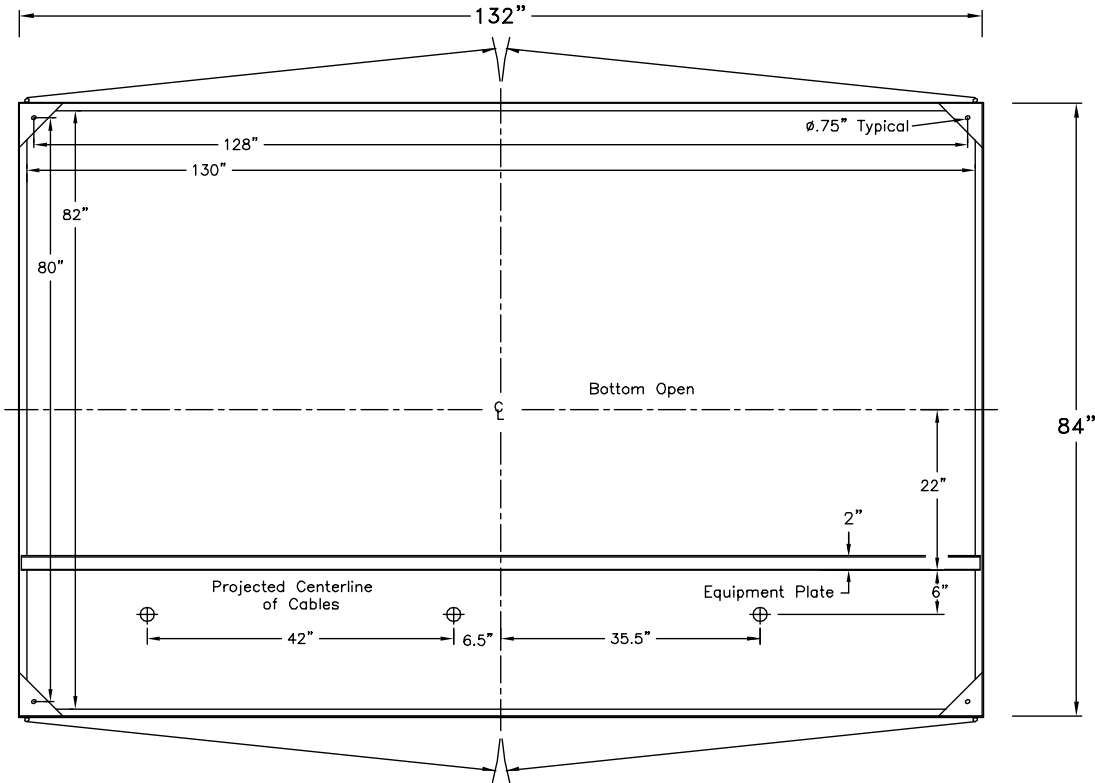
# EPM-PTS-25-311P-E6-CM6-250KVA

Three-Phase - Two Ways per Phase  
 600 Amp Elliott Air Insulated Bushings  
 125 Amp (Max) 15.5 kV Clip Mounted CL Fuse Provisions  
 15.2/26.3 kV Grd. Wye Max Design  
 60 Hertz, 125 kV BIL



Front View  
Doors Removed

① Bushings may be added if circuit requirements change.



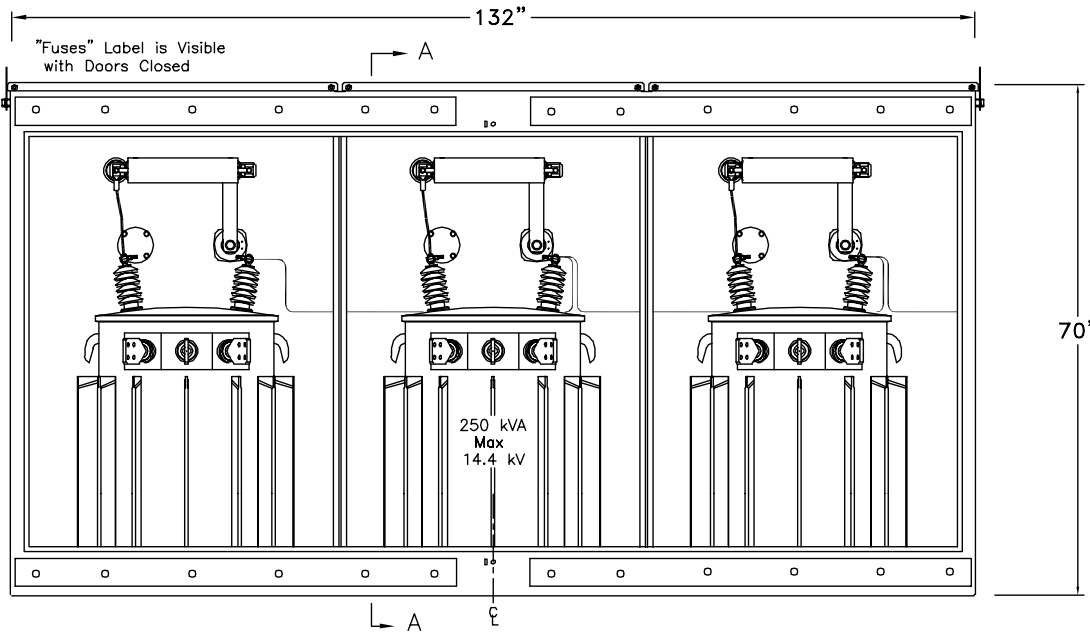
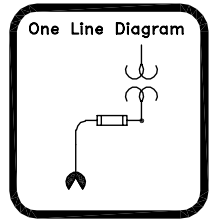
Section BB

- 11 Gauge Steel Enclosure
- Removable Cross Kinked Tops
- Stainless Steel Hinges
- Stainless Steel Parking Stands
- Recessed Stainless Steel Penta Head Security Bolts
- Clear Polycarbonate Sectional Door Safety Barriers
- 8" Min Strike Distance to Ground
- 10" Min Strike Distance Phase to Phase
- Paint "Pad-Mount Green" Munsell #7GY 3.29/1.5

EPM-PTS-25-311P-E6-CM6-250KVA		
Layout		
Date: 09-14-99	File: D99363RO	Drawing No.:
By: ACM	Approved by: JES	99-363-1
<b>Elliott Industries, Inc.</b> Bossier City, Louisiana 71171-6388 U.S.A.		

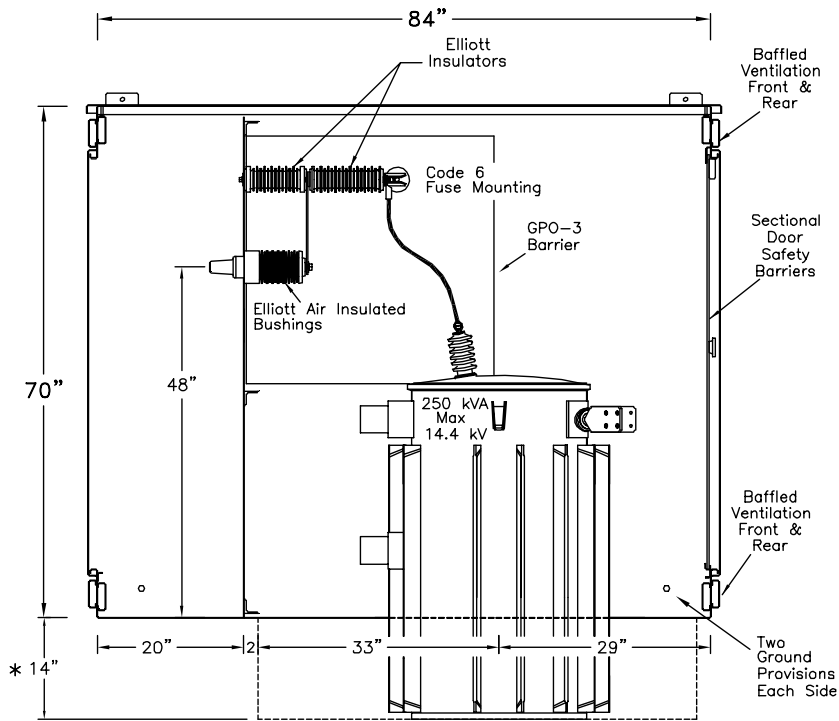
# EPM-PTS-25-311P-E6-CM6-250KVA

Three-Phase - Two Ways per Phase  
 600 Amp Elliott Air Insulated Bushings  
 125 Amp (Max) 15.5 kV Clip Mounted CL Fuse Provisions  
 15.2/26.3 kV Grd. Wye Max Design  
 60 Hertz, 125 kV BIL



**Rear View**  
 Doors & Door Safety Barriers Removed

① Bushings may be added if circuit requirements change.



\* NOTE: 14" Deep recess in pad

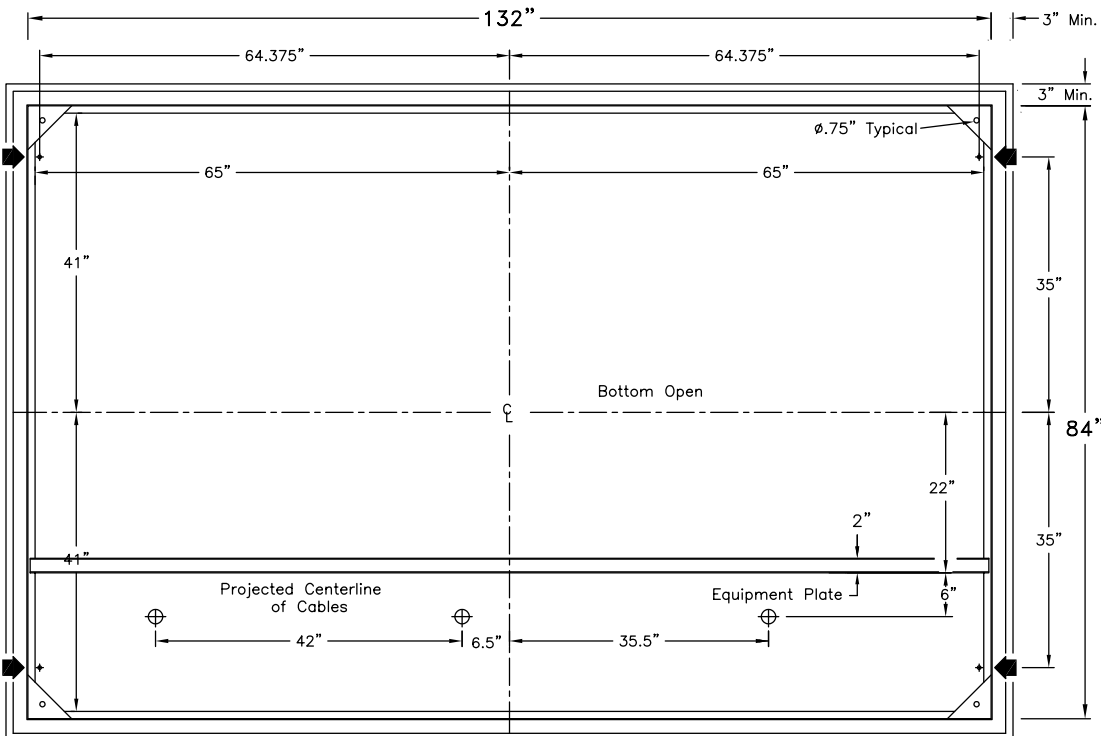
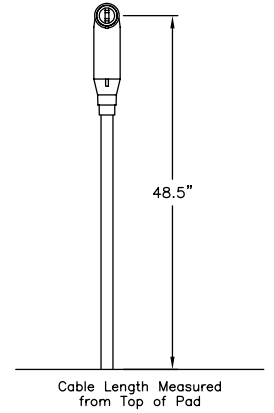
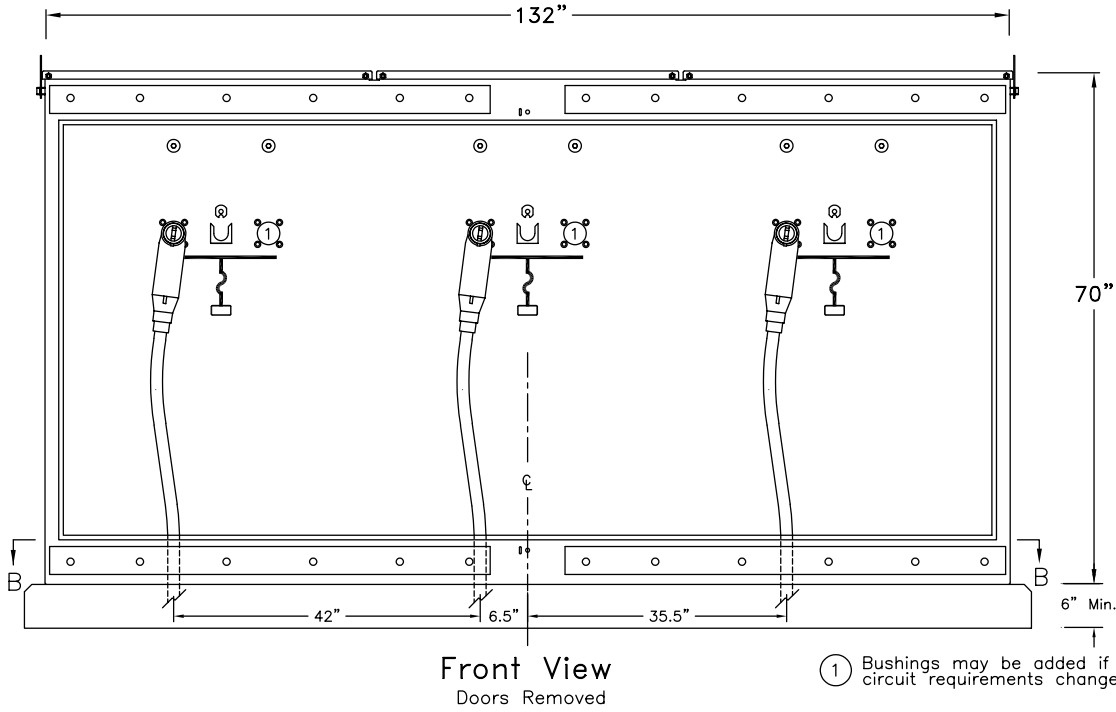
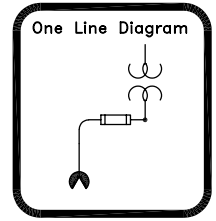
**Section AA**

11 Gauge Steel Enclosure  
 Removable Cross Kinked Tops  
 Stainless Steel Hinges  
 Stainless Steel Parking Stands  
 Recessed Stainless Steel Penta Head Security Bolts  
 Clear Polycarbonate Sectional Door Safety Barriers  
 8" Min Strike Distance to Ground  
 10" Min Strike Distance Phase to Phase  
 Paint "Pad-Mount Green" Munsell #7GY 3.29/1.5

EPM-PTS-25-311P-E6-CM6-250KVA Layout		
Date: 09-14-99	File: D99363R0	Drawing No.:
By: ACM	Approved by: JES	99-363-2
<b>Elliott Industries, Inc.</b> Bossier City, Louisiana 71171-6388 U.S.A.		

# EPM-PTS-25-311P-E6-CM6-250KVA

Proposed Cable Training and  
Typical Pad Requirements

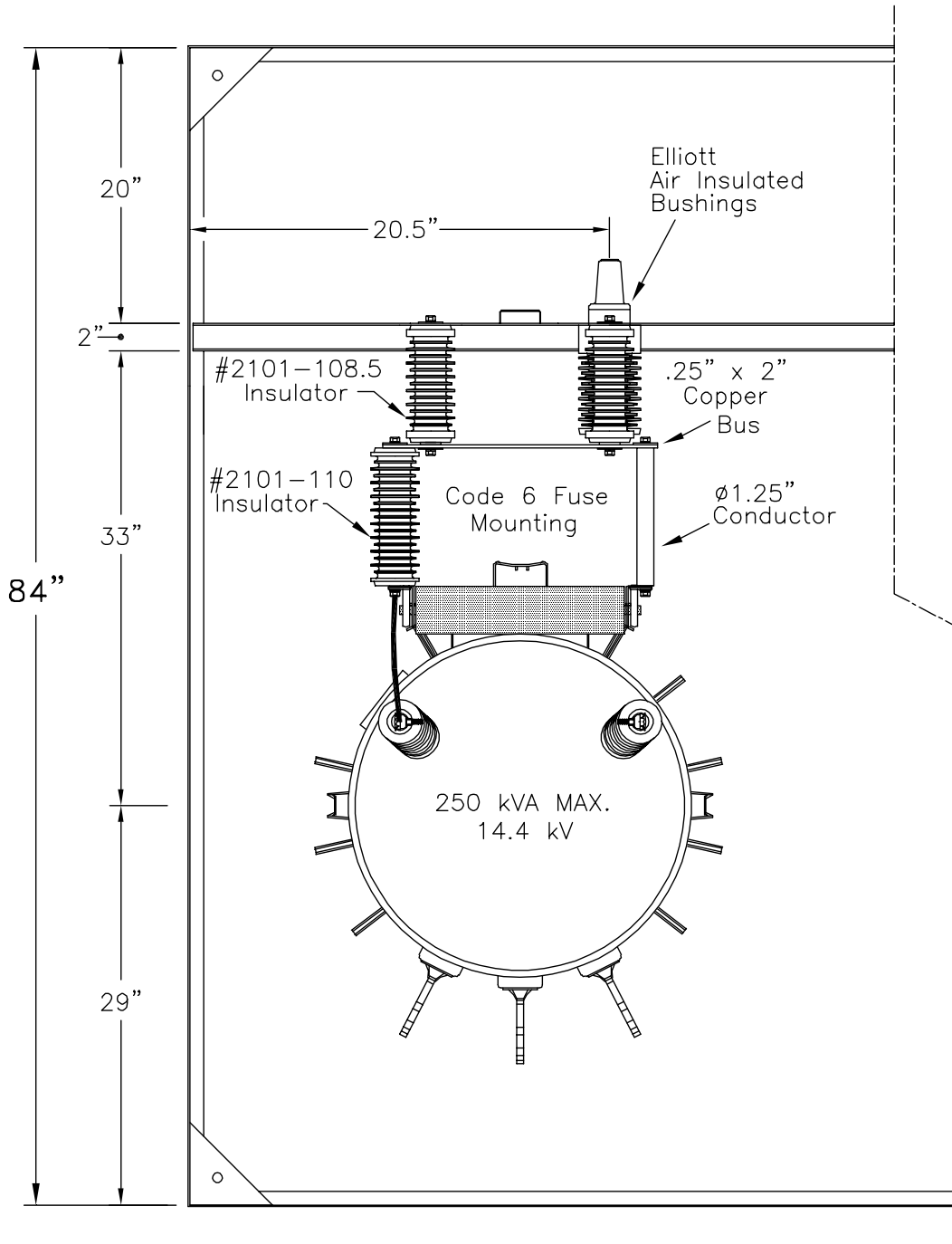
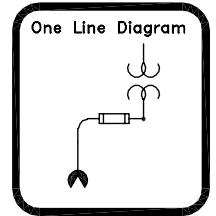


+ ◀ Anchor Bolt Locations

EPM-PTS-25-311P-E6-CM6-250KVA		
Proposed Cable Training & Pad Requirements		
Date: 09-14-99	File: D99363R0	Drawing No.:
By: ACM	Approved by: JES	99-363-3
Elliott Industries, Inc.		
Bossier City, Louisiana 71171-6388 U.S.A.		

# EPM-PTS-25-311P-E6-CM6-250KVA

Three-Phase - Two Ways per Phase  
 600 Amp Elliott Air Insulated Bushings  
 125 Amp (Max) 15.5 kV Clip Mounted CL Fuse Provisions  
 15.2/26.3 kV Grd. Wye Max Design  
 60 Hertz, 125 kV BIL



Top View of One Phase

EPM-PTS-25-311P-E6-CM6-250KVA		
Top View of One Phase		
Date:	File:	Drawing No.:
09-14-99	D99363-4R0	99-363-4
By:	Approved by:	
ACM	JES	
<b>Elliott Industries, Inc.</b>		
Bossier City, Louisiana 71171-6388 U.S.A.		