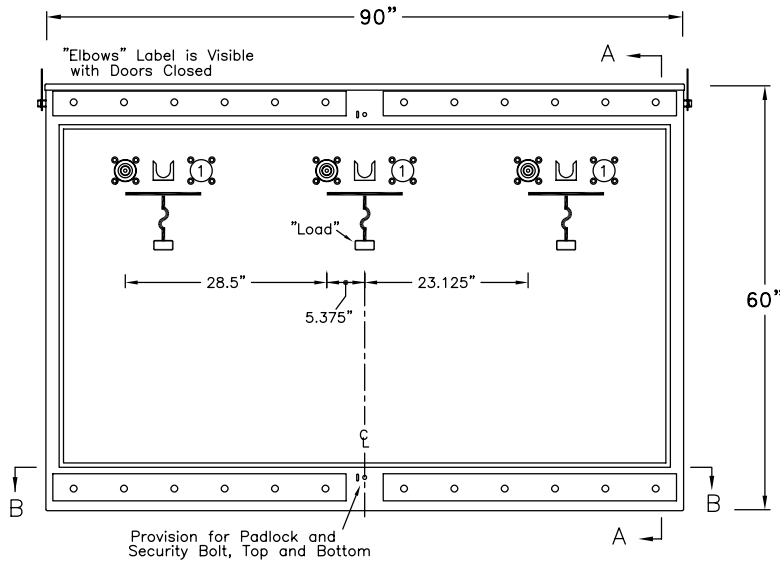
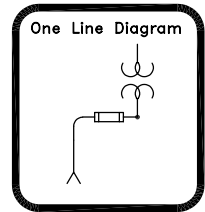


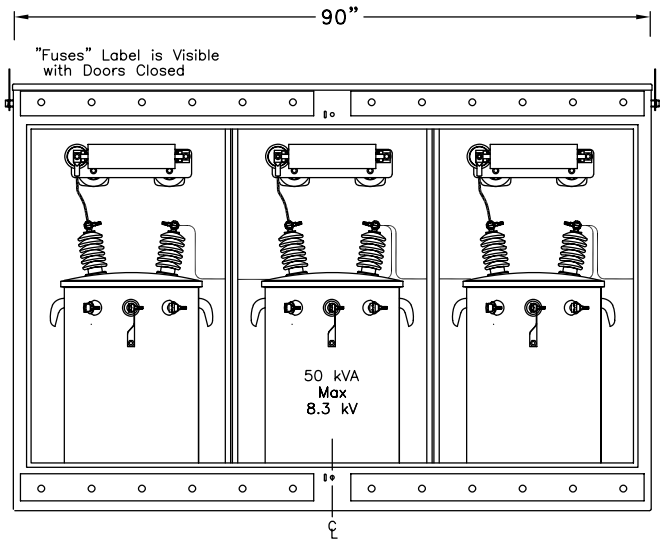
# EPM-PTS-15-311P-E2-CM5-50KVA

Three-Phase - Two Ways per Phase  
 200 Amp Elliott Air Insulated Bushing Wells  
 140 Amp (Max) 8.3 kV Clip Mounted CL Fuse Provisions  
 8.3/14.4 kV Grd. Wye Max Design  
 60 Hertz, 95 kV BIL

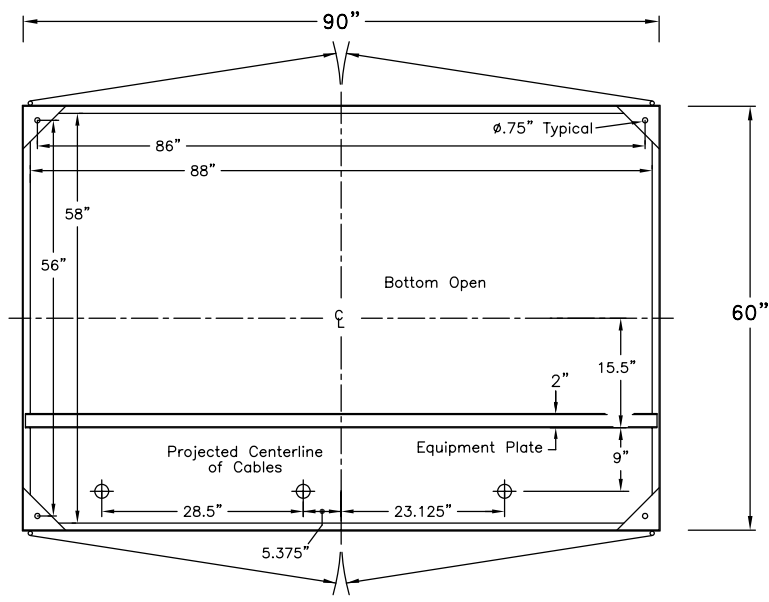


**Front View**  
Doors Removed

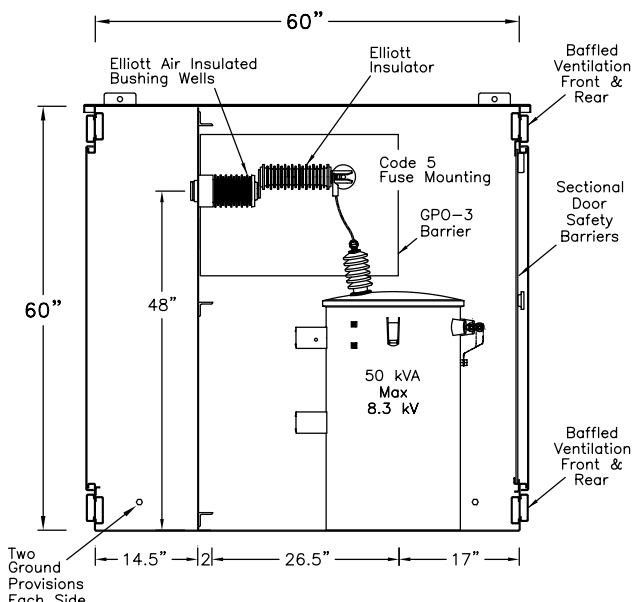
① Bushing Wells may be added if circuit requirements change.



**Rear View**  
Doors & Door Safety Barriers Removed



**Section BB**



**Section AA**

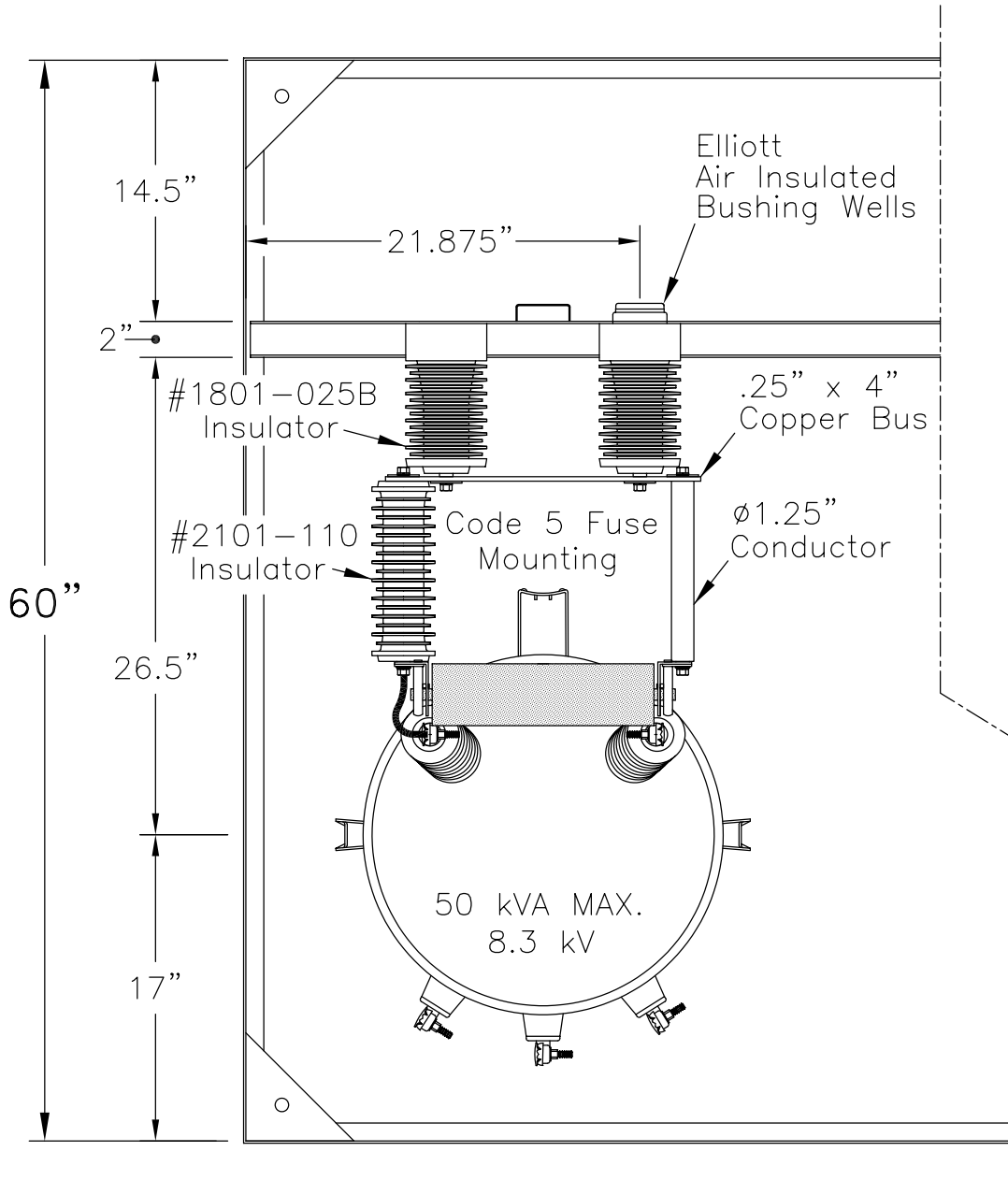
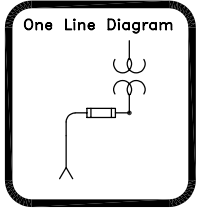
- 11 Gauge Steel Enclosure
- Removable Cross Kinked Top
- Stainless Steel Hinges
- Stainless Steel Parking Stands
- Recessed Stainless Steel Penta Head Security Bolts
- Clear Polycarbonate Sectional Door Safety Barriers
- 6" Min Strike Distance to Ground
- 8" Min Strike Distance Phase to Phase
- Paint "Pad-Mount Green" Munsell #7GY 3.29/1.5

<b>EPM-PTS-15-311P-E2-CM5-50KVA Layout</b>		
Date: 09-09-99	File: D99347R0	Drawing No.:
By: ACM	Approved by: JES	99-347-1
<b>Elliott Industries, Inc.</b>		
Bossier City, Louisiana 71171-6388 U.S.A.		



EPM-PTS-15-311P-E2-CM5-50KVA

Three-Phase - Two Ways per Phase  
 200 Amp Elliott Air Insulated Bushing Wells  
 140 Amp (Max) 8.3 kV Clip Mounted CL Fuse Provisions  
 8.3/14.4 kV Grd. Wye Max Design  
 60 Hertz, 95 kV BIL



Top View of One Phase

EPM-PTS-15-311P-E2-CM5-50KVA		
Top View of One Phase		
Date: 09-09-99	File: D99347R0	Drawing No.:
By: ACM	Approved by: JES	99-347-3
Elliott Industries, Inc.		
Bossier City, Louisiana 71171-6388 U.S.A.		